

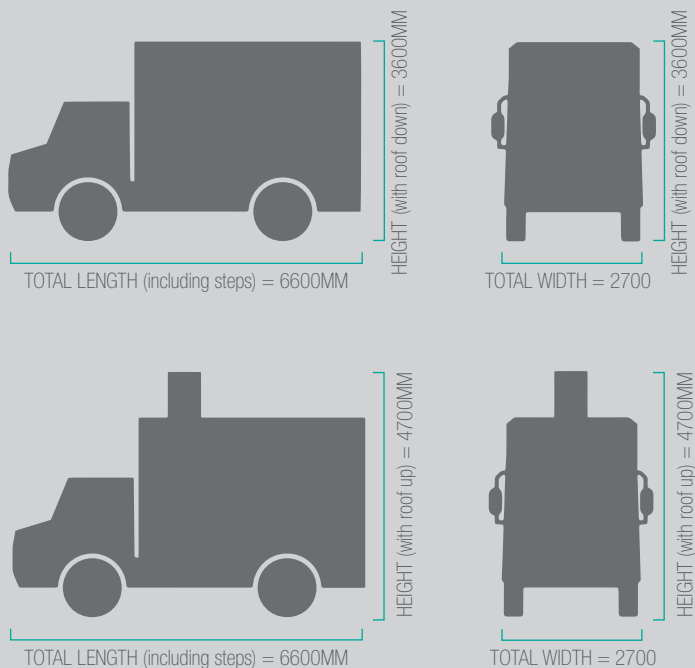
11 TONNE UNIMOG WHEELED RIG (CPT011)

This versatile 4 wheel drive truck (Unimog) is ideal for hardstanding and non hardstanding sites of medium to soft ground. It is capable of pushing a CPT to 25-30 metres, depending on the ground conditions. This rig contains a camera in the cab, useful for lining up over the test positions. Furthermore, the unimog is a short wheel base vehicle so it can access small positions with accuracy. In addition, this is a quiet rig, making it ideal for use in public areas.

CPT RIG DETAILS

DRIVE SYSTEM	4 WHEEL DRIVE
TOTAL WEIGHT	11 TONNES
GROUND BEARING PRESSURE	75KPA
CPT RAM THRUST CAPACITY	15 TONNES
MAXIMUM PENETRATION	25-30M DEPENDING ON THE GROUND CONDITIONS.
PERFORMANCE RATES	100-150M OF TESTING A DAY, DEPENDING ON ACCESS TO POSITIONS.
TYPICAL SITES FOR THIS RIG	HARDSTANDING SITES E.G. ROADS, CAR PARKS. DRY NON HARDSTANDING SITES. MEDIUM/SOFT GROUND.

CPT RIG DIMENSIONS

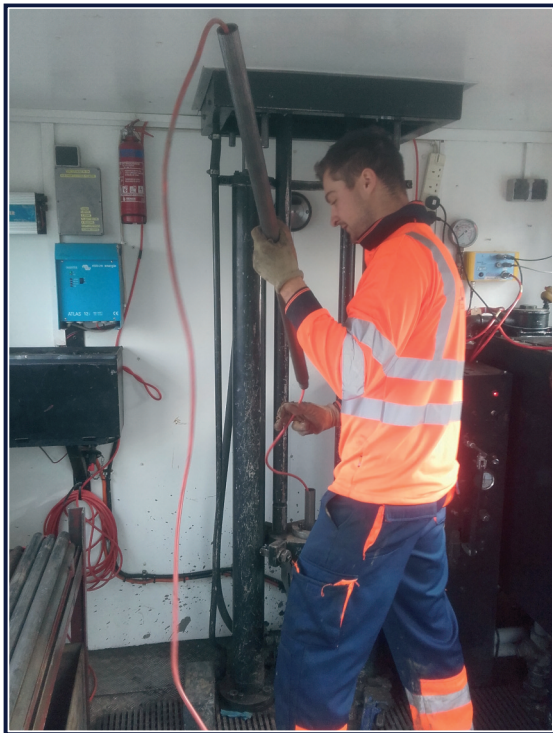


PROJECT REVIEW

In Situ Site Investigation has used this rig at the Dublin Transport Hub, Ireland. Two of our experienced staff members completed 16 CPTs to a depth of 15 metres.

We were asked to carry out these tests to confirm the ground conditions for piling. The ground type was found to be an average of 2 metres of sands, then approximately 5 metres of silt and finally into 8 metres of clay.

The camera in the cab of the unimog proved extremely useful for this project as the predrilled casing was only 50mm in diameter, leaving little room for error. Despite this, the tests were lined up accurately and the project was completed in good time.



IN SITU SITE INVESTIGATION
Innovation Centre, Highfield Drive, St Leonards On Sea,
East Sussex, TN38 9UH, UK

T: +44 (0) 845 862 0558
E: info@insitusi.com